

SCHWING Shotcret Pumps

BPN 300RE

The BPN 300 RE was developed particularly for the Top SHOT wet spraying procedure for demanding use, e.g. in the tunnel construction. By switching a valve the BPN 300 RE works alternatively as a wet spraying unit or as a concrete pump.

The Concrete Pump kit BPN 300 RE, is hydraulically driven with 37 kw electric motor and has an oil cooler and micro-fine filter. It also comes with a Metering device for dozing operation, which synchronizes with concrete pumping.

For connecting the nozzle, the Concrete outlet pipes comes with a reducer from DN 125 to 65mm. The pump is mounted on a towing type chassis with Axle, Spring and tyres.



TECHNICAL DATA

Data	Units	BPN 300 RE
Max theoretical output	cbm/hr	33
Max. concrete pressure	bar	59
Pumping cylinder dia/stroke	mm	180/630
Hopper capacity	L	200
Charging height	mm	1450
Pipeline connection	mm	50-125
Electric motor 400 V, 50 cycles	kW	37
Protection mode	IP	55
Dozing Capacity	L/m ³	6
Max. Aggregate Size	mm	25
Cable Length	m	70



SCHWING - STETTER
ALWAYS CLOSE TO THE CUSTOMER.

- Sales Office
- Resident Engineer
- Resident Engineer with Spares Depot
- Service Centre with Spares Depot
- Dealership Support
- Customer Training Center

SCHWING STETTER (INDIA) PVT LTD

An ISO 9001 : 2008 Company

CORPORATE OFFICE : F 71 - 72, SIPCOT Industrial Park, Irungattukottai, Sripurambudur Taluk, Kancheepuram District, Tamil Nadu - 602117.
Tel : +91 44 71378100 / 106, 37178100 / 106
Email : schwing@vsnl.com

Mumbai : 620/621, Nirmal Lifestyle Corporate Centre, 6th floor, LBS Marg, Mulund (West), Mumbai 400080.
Tel : 022 25624863 / 64, 30718300
Fax : 022 25624865 / 66
Email : mumbai@schwingstetterindia.com

New Delhi : 19, Okhla Industrial Estate, Phase III, New Delhi - 110 020.
Tel : 011 30928500 Fax : 011 30928530
Email : newdelhi@schwingstetterindia.com

Kolkata : Y6, Block EP, Sector V, Electronics Complex, Salt Lake City, Kolkata-700091. Tel: 033 3322 3300
033 3355 5588 Fax : 033 3322 3326
Email : kolkata@schwingstetterindia.com

Hyderabad : No.8-2-268/1/C, Plot 2, Road 3, Arora Colony, Banjara Hills, Hyderabad-500034.
Tel: 040 33555588 / 30948601 Fax: 040 23731770
Email : hyderabad@schwingstetterindia.com

Mohali : D 91-PH-VII, Industrial Area, Mohali, Punjab - 160 055. Tel : 0172 3957500 / 3957501
Email : chandigarh@schwingstetterindia.com

Bangalore : No 138-B,"UDAYAGIRI COMPLEX", 3rd Phase, KIADB Industrial area, Peenya, Bangalore - 560058.
Tel : 080 3355 5588 Fax : 080 3011 4301
Email : bangalore@schwingstetterindia.com

Visakhapatnam : Plot No.54, IDA - Block 'D', Expansion, Auto nagar, Visakhapatnam - 530 012.
Tel : 0891 6461783 Fax: 0891 2706063

Jammu : C/o. VRL Logistics Limited, Plot No. 19, Transport Nagar, Narwal, Jammu - 180006.
Tel : 099060 35941.

Ahmedabad : 103, Shivalik Arcade, 100 Ft., T.P Anand Nagar, Satellite Road, Ahmedabad 380 051.
Tel : 079 3355 5588 Fax : 079 4006 4084
Email : ahmedabad@schwingstetterindia.com

Cochin : No.134 / 1404 B, Arakkakadavu Road, Anchumana, Edappally P.O. Cochin - 682 024.
Tel: 0484 - 3355558 / 4055544 Fax: 0484 4506165
Email : cochin@schwingstetterindia.com

Bhubaneswar : Plot No:182, Naharkanta, Rudrapur, Beside Puri Main Canal, NH5, Bhubaneswar - 752101 Odisha. Tel : 9078884484 / 85

Pune : Arihant Court, No.1,2 & 3, 481, Rasta Peth, Mudliar Road, Pune - 411011. Tel: 020 3355 5588
Fax : 020 3053 1517, 3053 1511
Email : pune@schwingstetterindia.com

Coimbatore : 2005, Trichy Road, Old Rajalaxmi Mills, Singanallur, Coimbatore-641005. Tel: 0422 4506165
Email : coimbatore@schwingstetterindia.com

Raipur : NH-6, Opposite Vardhaman Motor, Kumahari, Dist - Durg, Chhattisgarh - 490042.
Tel : 07821 247066
Email : sunil.kumar@schwingstetterindia.com

Patna : C/o. Mrs. Hamanti Devi, East Pahari, NH-31, Near Zero Mile, Patna - 800007. Mob : 09570996702
Tel: 0612 3057728 Fax : 0612 3057725
Email : rajiv.chandra@schwingstetterindia.com

Surat : C-19 & D-19 Green Park, Light Industrial Estate, Opp. Madhav Park, Udhna Navsari Road, Unn - Surat -395023.
Tel : 08980002726
Email : ahmedabad@schwingstetterindia.com

Guwahati : House No. 161, Jaya Nagar, Six Miles, Khanapara, Guwahati 781 022.
Tel: 0361 2234738 / 099575 66738

Goa : Next to Barreto Metal Works, House No 451/1, Dagwal, Madgaon-Ponda Highway, Raia, Salcete, Goa - 403720. Tel: 7304437377

Nagpur : C/o Amrut Dairy Farm, No. 118, Opp VCA Stadium, Jamtha, 16th KM Milestone, NH-7, Wardha Road, Nagpur - 441108. Tel : 07104327484
Email : goraj.bawankule@schwingstetterindia.com

Indore : Godown no.20, Pipliya Kumar Mangal Compound, Dewas Naka, MR-11, Indore - 452010. M.P. Tel : 0731 4002487
Email : ahmedabad@schwingstetterindia.com

Jaipur : F-95, Om Industries, Godown, No.18, Road No.7, Vishwakarma Industrial Area, Jaipur - 302 013. Phone: 08939804085



SCHWING
Stetter

SCHWING Shotcret Pumps

SCHWING Stetter introducing its range of shotcreting machines designed for deployment in rigid site conditions with special regards to tunneling requirements.

Special Feature



← Nozzle

The movements of the steel pipe are executed with two slewing motors. One of these allows the steel pipe to be rotated 360 degree around the axis, while the other allows the steel pipe to be swivelled by 270 degree transverse to the axis of shotcrete arm. A rotatory drive provides for adjustable declination and speed. All these movements guarantee optimum shotcrete application positions vertical to the application surface and uniform shot creting.

Rotatable Operator Seat

The operator seat can be swivelled by 180 degree and operator is protected by a sturdy roof. All control elements needed for moving the vehicle are ergonomically laid out. Two gear stages for 0 to 8 km/h and 0 to 20 km/h are available. 30 percent gradients can be climbed in the 1st gear when the standard 50 Kw vehicle motor is installed.



← Rock Valve

The patterned rock valve guarantees that even stiff concrete consistencies with a low water/cement ratios can be reliably handled even when the concrete pump is operating at high pumping pressure. This is a pre condition for shot creting with high-density conveyance, i.e for the wet-mix shot creting procedure. It is only with low water/cement ratio of less than 0.5 that accelerators can act quickly.

Remote Control

The manipulator is controlled with a simple remote control, allowing the operator to select the location best suited to him for shotcreting with the best angle for viewing the application surface. Using a liver control mechanism, all manipulator movements can be executed with control block. The speed of individual movements can be readily adopted to the needs of the operator.



← 4 Wheel Drive

The carrier vehicle used is a purpose-built mining vehicle with 4 wheel drive and 4 wheel steering, whose hydrostatic drive is executed as a sturdy welded structure. The option of front-axle, 4 wheel or crab steering mean that travelling and maneuvering can be done even when site conditions are unfavourable.



↑ Control Panel

All electrical control elements needed are located on a straight forward control panel. The drives with the control elements are covered with a readily removable housing. Special value has been attached to having valves, control elements and other components readily accessible for maintenance purposes.



↑ Cable drum

The cable drum which holds 70 meter cable is hydraulically driven and equipped with Winder.



↑ Water Tank

Water tank is provided in a protected location near the proportionating pump.

Robust, Practical Machine with dependable modules

TSR 30.14

It is a Universal Shotcrete Machine driven by a diesel engine, equipped with a shotcrete pump and a telescopic boom for concrete spraying. The shotcrete pump has the ability to deliver 33 m³/hr of concrete at 59 bar.

The telescopic boom is extendable up to 14m. The boom can rotate 270° about y-axis. Both the pump and boom are driven by an electrical motor. Emergency operation of boom is carried out by a separate geared pump driven by vehicle's diesel engine.

Spraying head consist of three hydraulic motors. Two hydraulic swivelling motors are for adjusting the nozzle rotation and one hydraulic revolving motor is for the nozzle oscillation.

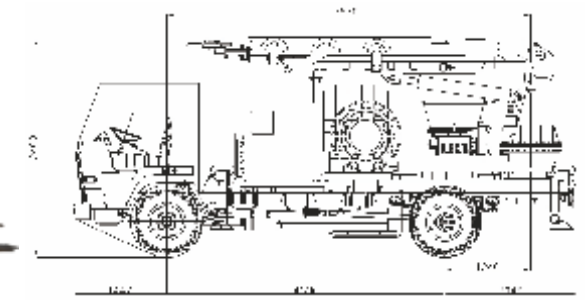
Power-controlled hydrostatic drive unit with variable pump mounted directly to the diesel engine. Power to both axles is transmitted by means of hydrostatic variable motor via transfer case. Steering of vehicle is switchable to four-wheel steering, front-axle steering and crab steering.

Open drivers stand equipped with ROPS/FOPS shelter. The vehicle can be driven in both directions by rotating the stand to 180°. Hydraulically driven water pump of 200 bar for cleaning purpose. It is also equipped with a piston type dosing pump made up of stainless steel.



TSM 30.14

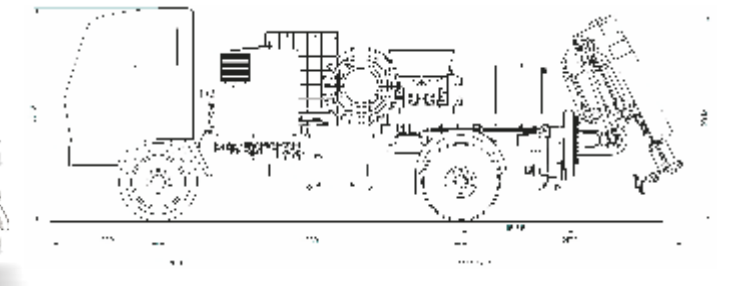
TSM 30.14 is a Universal Shotcrete Machine mounted on a truck chassis, equipped with a shotcrete pump and telescopic boom. The pump kit and boom used here are same as that of TSR 30.14.



Chassis : Ashok Leyland 161, 4x2, 4300mm wheelbase with PTO pump.

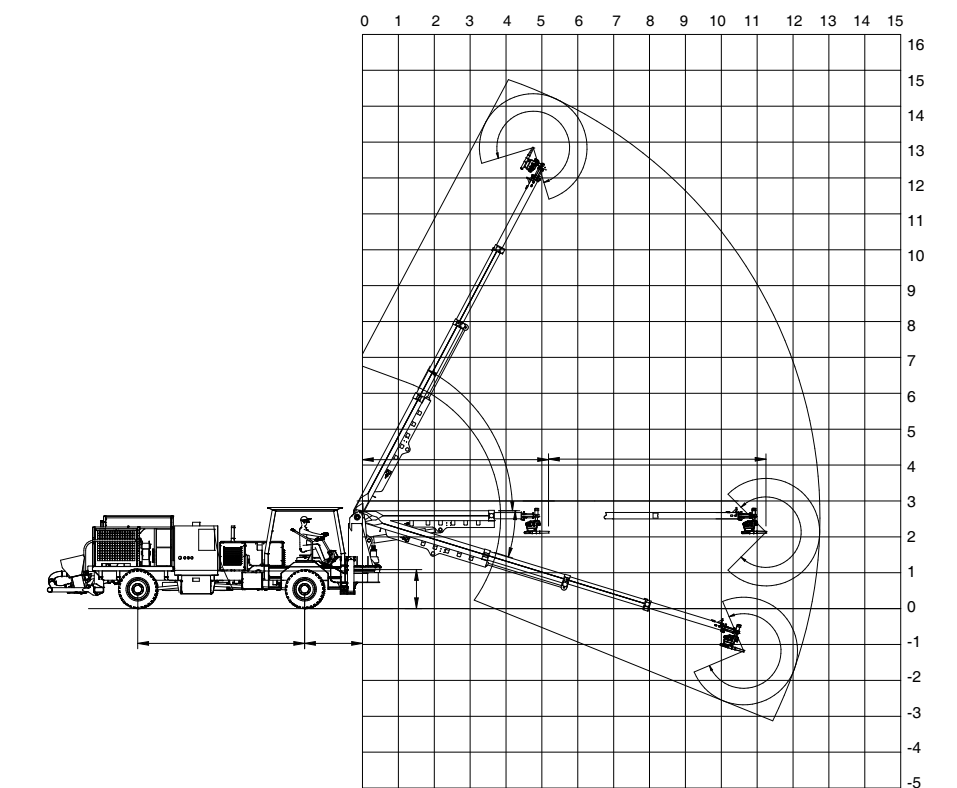
Shotcreting with a telescopic shotcrete manipulator

TSM 20.8



TSM 20.8 is a space optimized Shotcrete Machine with 8M boom on Truck. Foldable 2 Section boom coupled with rotatable horizontal axis makes it versatile and easy to use in tough shotcreting jobs. Curved profile of the tunnel can be followed in single Joy stick movement on the remote control unit. This small but power boom is suitable for Tunnel size starting from 5M to 16M.

Reach Diagram



TECHNICAL DATA

Boom

Data	Units	Boom
Boom vertical reach	m	14
Boom Horizontal reach	m	11
Boom rotation		270°
Boom lifting		-17° ...+62°
Extension	m	6 (2 + 4)
Nozzle rotation		360°
Nozzle tilting		270°
Nozzle slewing		360°

Pump kit

Data	Units	Pump
Maximum theor. Concrete output	m ³ /h	33
Max. Concrete Pressure	bar	59
Max. number of strokes		35
Pumping Cylinder, dia x stroke	Ø	180 x 630
Piston displacement, 2 cylinders	l	32
Capacity of charging hopper	lts.	200
Capacity of Dosing tank	l	1000
Max aggregate size	mm	25